

Deployment & operation of C-ITS across borders, French pilot

The future of Cooperative Mobility Services

13 February 2020 – Brussels, Belgium

Eric Ollinger

Ministère de la Transition Ecologique et Solidaire



MS leadership / road operators

- Ministry of Transport
 - Central administration
 - Public road operators : DIRN, DiRIF
- SANEF (private road operator)

Research centers / security experts

- IFSTTAR / Université Gustave Eiffel
- Université Reims Champagne-Ardennes
- Université Polytechnique Hauts-de-France
- Institut Mines-Télécom
- IDNomic

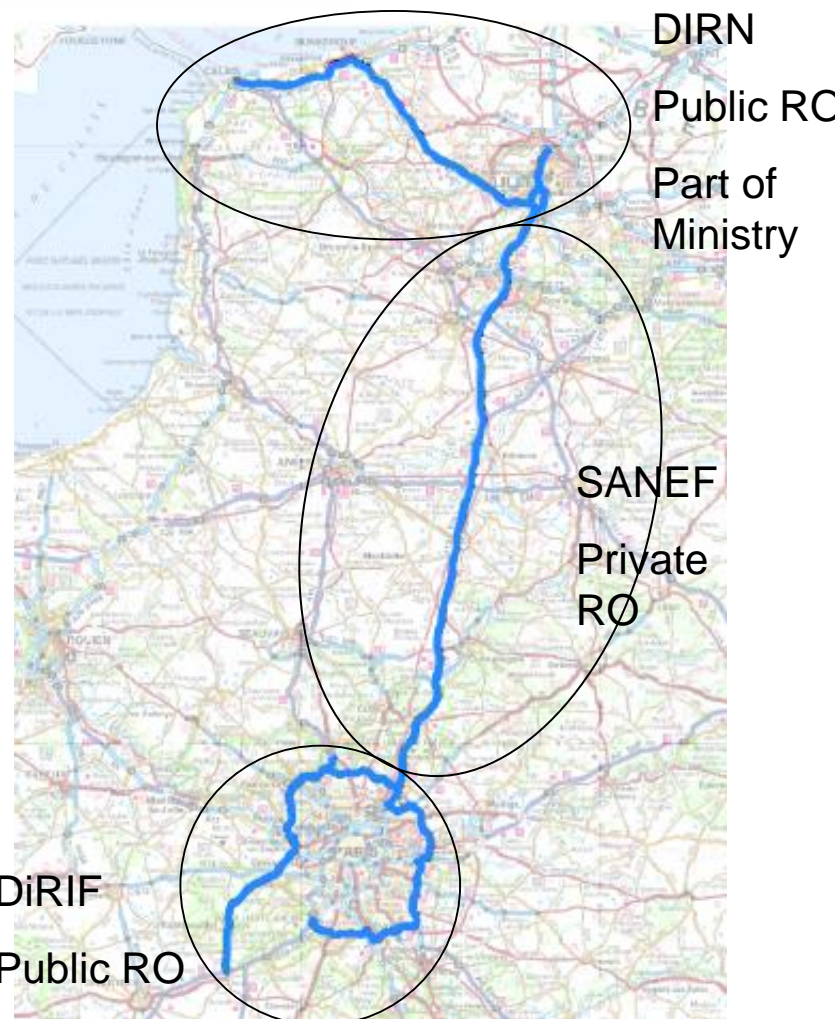
Logistics experts

- i-Trans
- Gyptis
- NeoGLS

Associated for logistics services :

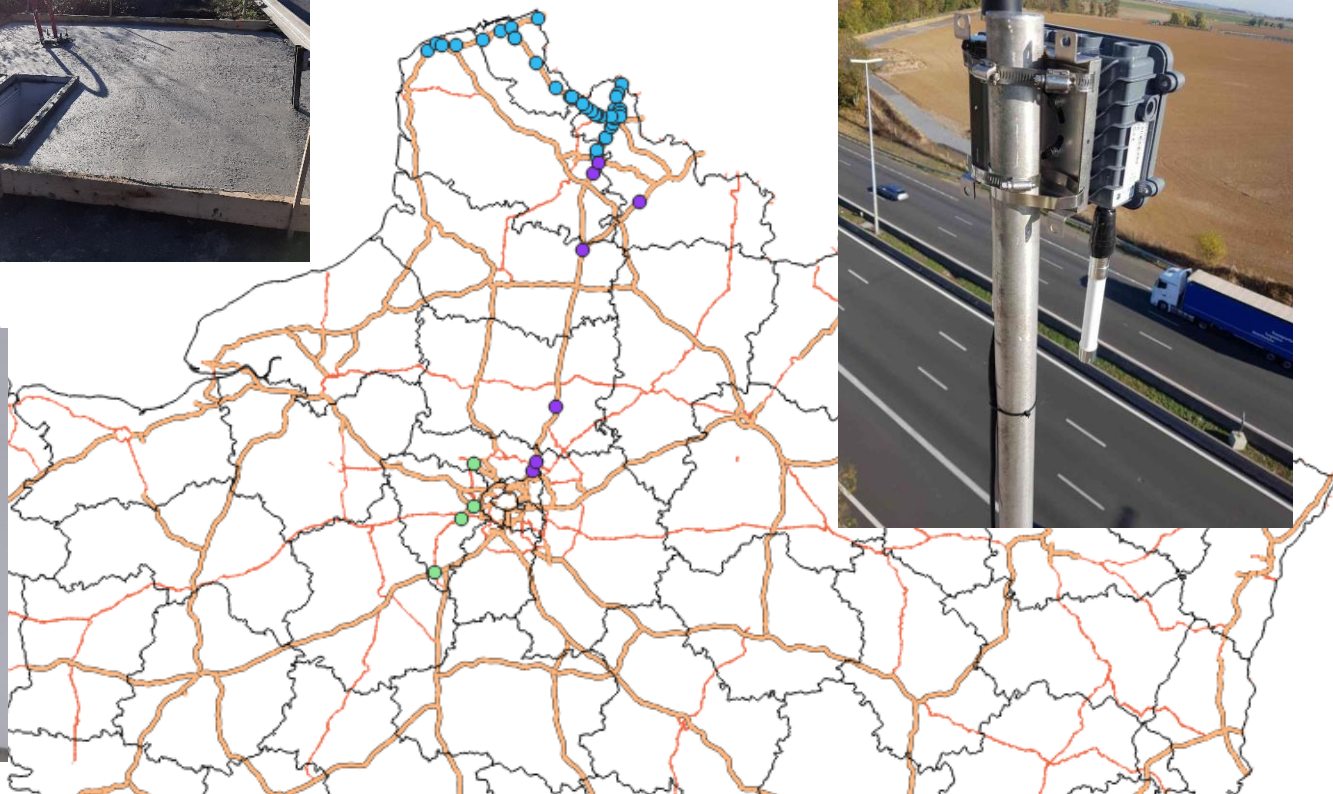
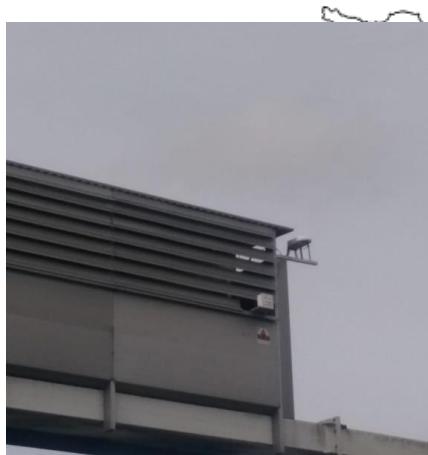
- Transport Bogaert (truck fleet)
- Dunkirk port Terminal des Flandres (container terminal)

Service	Technology	Use case
RWW	ITS-G5, Cellular	Lane closure or other restrictions
		Alert planned closure of a road or a carriage way
		Alert planned road works – mobile
IVS	ITS-G5, Cellular	Embedded VMS
PVD	ITS-G5	Traffic data collection
		Probe vehicle data on detected/declared events
MCTO	Cellular	Multimodal ETA for cargo optimisation
		Dock reservation
Truck Parking	ITS-G5, Cellular	Information on parking slots availability
GLOSA	Cellular	Time-to-green information and speed advice





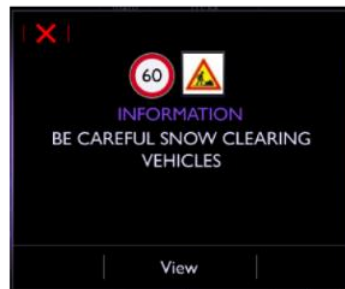
InferCor Deployment of RSUs



Co-financed by the European Union
Connecting Europe Facility

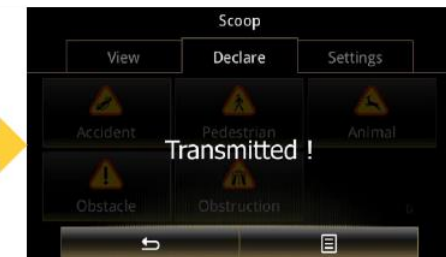


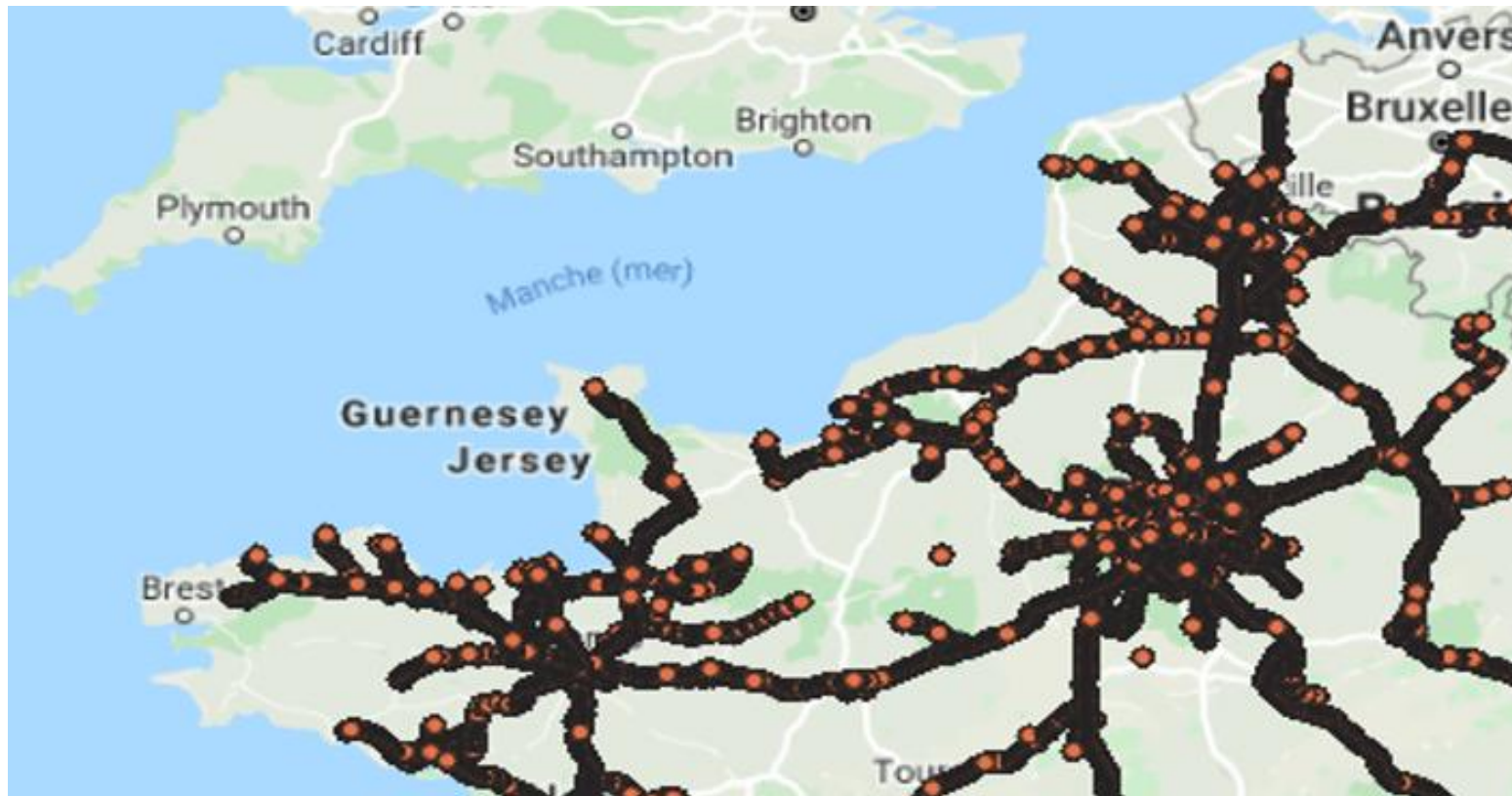
InerCor Interoperability with SCOOP fleets



PSA HMI

Renault HMI





PVD (CAM messages)
emitted by SCOOP fleets

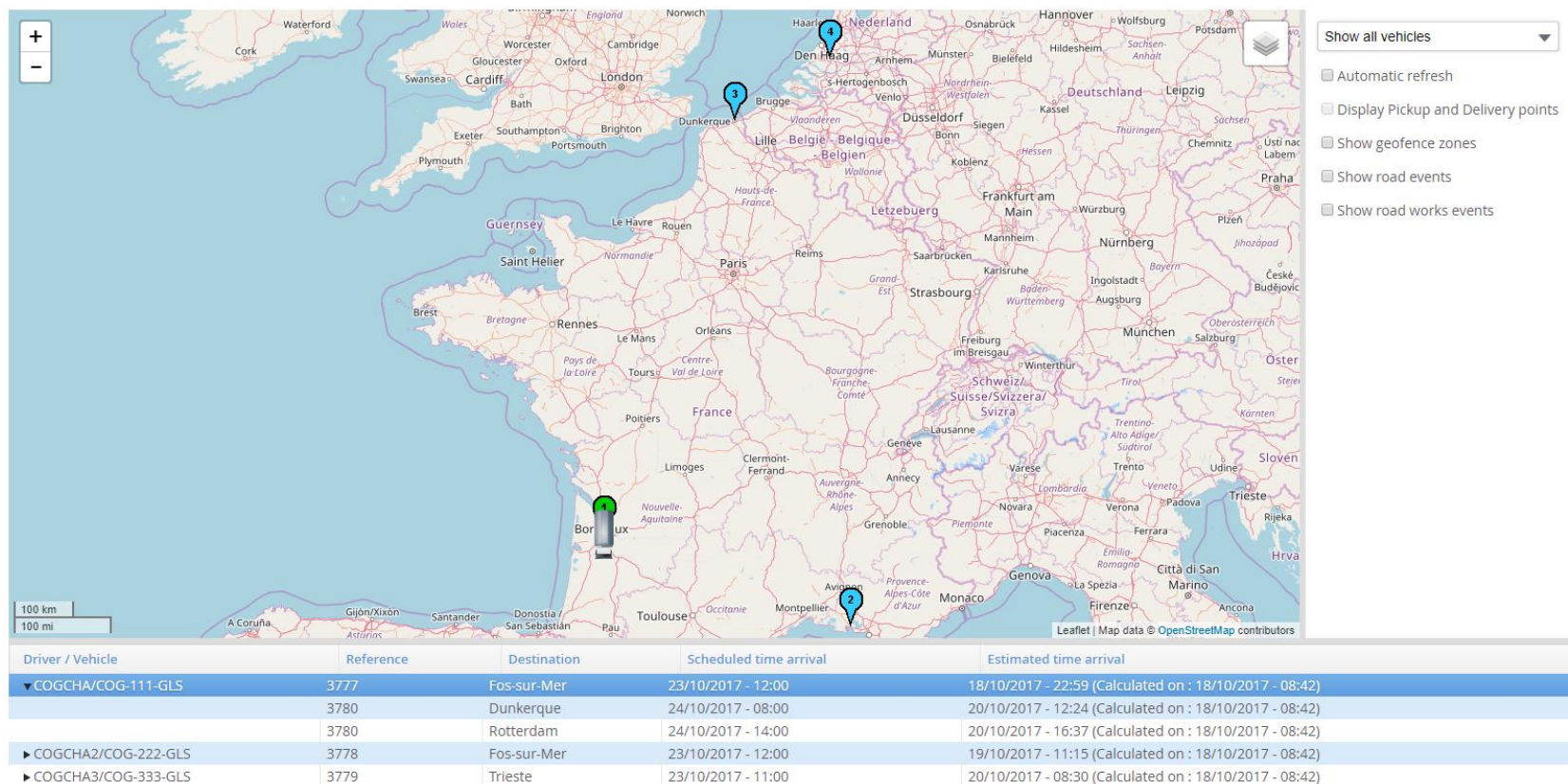
InferCor Truck fleet for logistics services



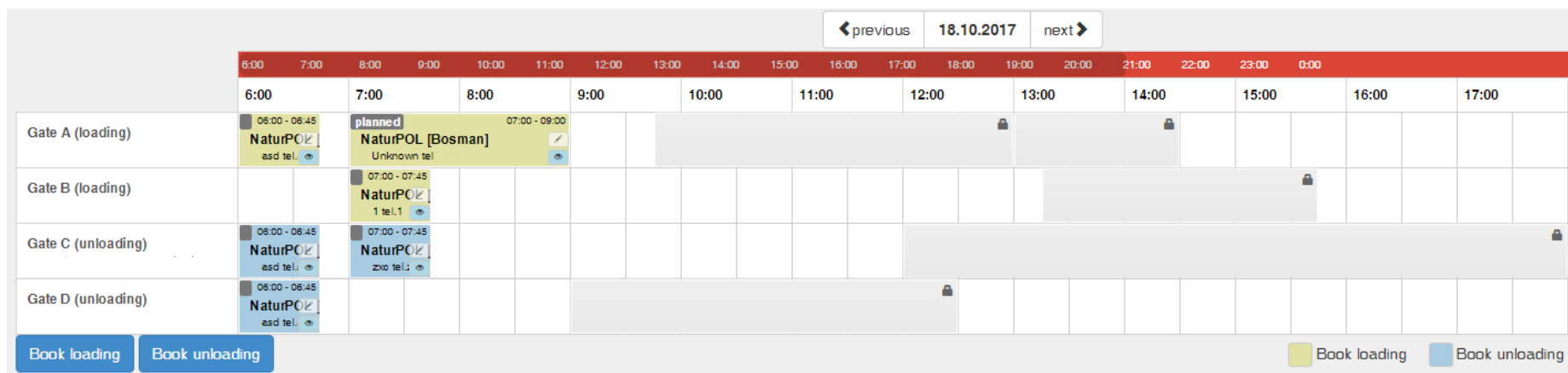
Co-financed by the European Union
Connecting Europe Facility

ETA (Estimated Time of Arrival) for Trucks

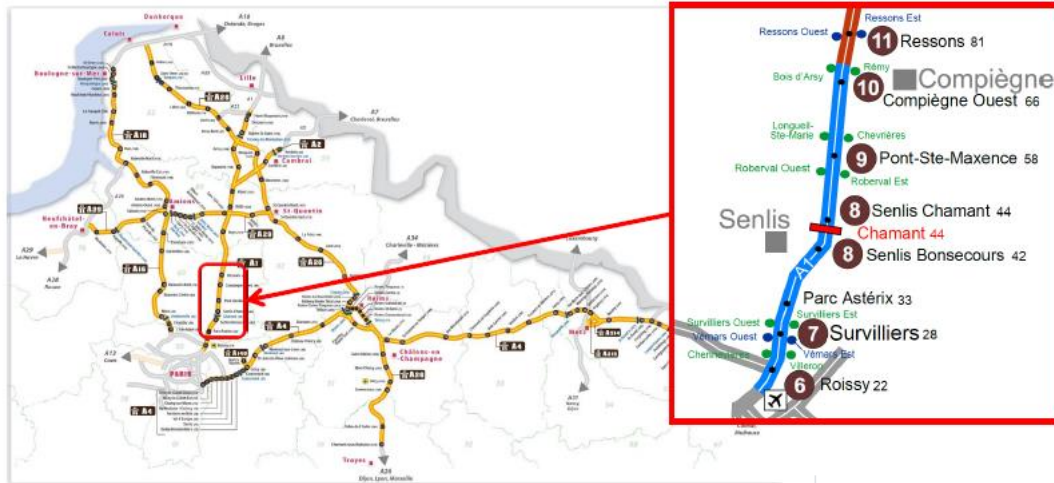
Transport tracking display



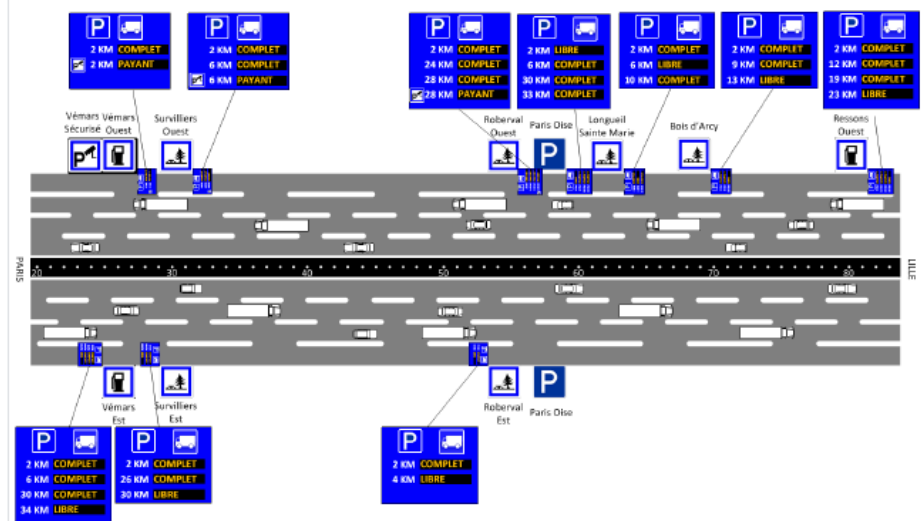
Affect a slot for truck or container



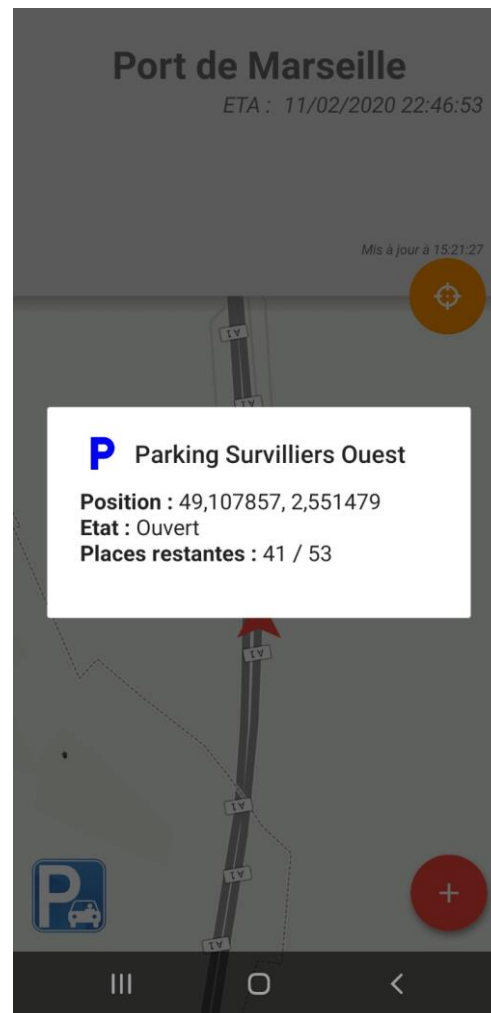
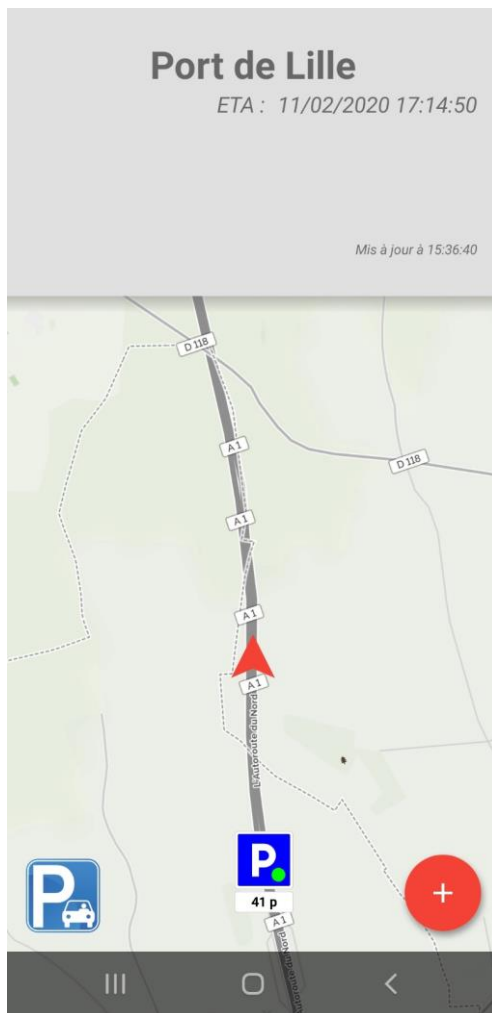
InferCor Truck Parking



12 parking areas
equipped over
SANEF network



Co-financed by the European Union
Connecting Europe Facility



A naturalistic and user-centric approach

- Logistics use cases chosen and built with the final users through several workshops
- Both cars and trucks driven in real life conditions

An architecture fully compliant with C-ITS standards

- Logistics services developed under the same C-ITS architecture as other services
- Signature of cellular messages

Three levels of interoperability

- Interoperability between 3 road operators
- Interoperability with SCOOP
- Cross-border interoperability





Thank you



Co-financed by the European Union
Connecting Europe Facility

